



Company Profile

We provide engineering design services for all types of buildings

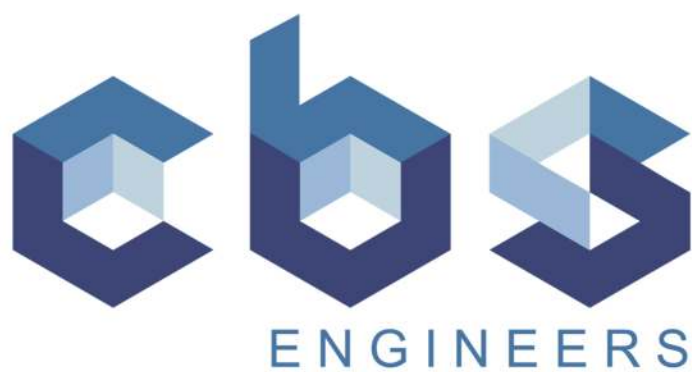




TABLE OF CONTENT

1

ABOUT

- 1.1 Our Mission (03)
- 1.2 Our Values (03)
- 1.3 Our Vision (03)
- 1.4 Our Approach (03)

2

CAPABILITIES

- 2.1 Our Main Business Activities (04)
- 2.2 Our Services (05 to 08)
- 2.3 Meet Our Key People (09 to 11)
- 2.4 Association Memberships and Certifications Held (12)

3

TRACK RECORD

- 3.1 Leading Projects Completed and Major Clients (13 & 14)
- 3.2 Delivery Performance and Reliability (15)

4

RISK MANAGEMENT

- 4.1 Quality Management (15)
- 4.2 Insurances (15)

5

CUSTOMER SERVICE

- 5.1 Communication (16)
- 5.2 Continuous Improvement and Innovation (16)
- 5.3 Responsiveness (16)

6

CONTACT (17)





ABOUT

1.2 Our Values

To have a **Client Focus**: We take pride in working closely with our clients, building strong working relationships based on trust, in order to produce the highest quality, best possible outcomes for every project.

To be **Innovative and Creative**: We continually strive to develop and enhance the solutions we offer, the support we provide to our clients and the service with deliver.

To demonstrate **Leadership**: The CBS team takes a leadership role by managing the multi-disciplinary services for each project.

To provide **Professional Engineering Services**: CBS Engineers are a "one-stop shop" providing multi-disciplinary engineering design services, including specialised project requirements and delivery of projects at short notice.

1.1 Our Mission

CBS Engineers are committed to providing innovative, professional and cost-effective engineering design solutions for our valued clients. Our highly experienced team works together to ensure we deliver engineering excellence in a safe, timely and sustainable manner.

1.3 Our Vision

Our vision is to harness our team's expertise and passion to:

- Build strong business relationships
- Seek new ways to deliver superior engineering services
- Enhance our reputation for engineering excellence
- Deliver our services with integrity and professionalism

1.4 Our Approach

At CBS Engineers, we approach all our projects with a "can-do" attitude. We utilise our team's great wealth of engineering experience to produce the most innovative design and solutions.

We provide flexibility, in order to meet our client's requirements, whilst delivering the project **ON TIME**.





OUR CAPABILITIES

2.1 Main Business Activities

CBS Engineers provide engineering design services for all types of buildings, including:



Apartments



Commercial



Retail



Hospitals



Childcare Centres



Educational Facilities



Hotels/Hospitality



Industrial Building



Office Buildings



Chamber Sub-stations



OUR CAPABILITIES

2.2 Our Services

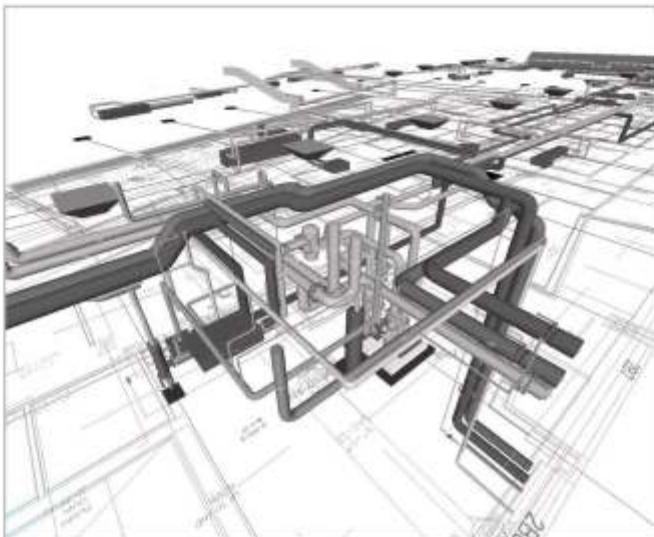
CBS Engineers provide a range of engineering services, which include:



Mechanical Services

Our Mechanical Services are tailored to meet our client's requirements. Our team of talented engineers are innovative and eager to apply their expertise in mechanical design to meet the design intent. The Mechanical Services we specialise in are as follows:

- Air Conditioning Services Design
- Heating and Cooling Systems
- Displacement Air Conditioning Design
- Mixed Mode or Natural Ventilation Systems
- Chilled Beam Design
- Under-floor Heating Systems
- Data Centres
- Building Management Systems
- Mechanical Audit Reports



Electrical Services

The CBS Engineers Electrical Services team deals with a wide range of electrical specialties, in order to create an innovative solution for each project. The Electrical Services team specialises in the following:

- Power Reticulation
- Substation Planning
- Lighting Protection
- General Electrical Services Planning
- Exits and Emergency Lighting
- Sub-main Design
- Surge Protection
- Busbar Systems
- Switchboard Design
- Standby Power Generators
- Uninterruptable Power Supplies
- Internal and External Lighting





OUR CAPABILITIES

2.2 Our Services

CBS Engineers provide a range of engineering services, which include:



Fire Services

Our Fire Services engineers work co-operatively with clients, providing them with optimal design solutions to protect life, assets and the environment. The Fire Services team provides expertise in the following services:

- Manual Call Points Systems
- Emergency Warning and Intercom Systems
- Wet Fire Systems
- Dry Fire Systems
- Fire Hose Reels
- Fire Engineered Solutions
- Thermal Detector and Smoke Detector Systems



Hydraulic Services

The CBS Engineers Hydraulics team are committed to working closely with the client and design teams, providing them with the most cost effective design and solution. Our Hydraulic Services team provides expertise in the following services:

- Hot Water
- Cold Water
- Gas
- Stormwater Draining
- Sanitary Plumbing





OUR CAPABILITIES

2.2 Our Services

CBS Engineers provide a range of engineering services, which include:



Acoustic Services

CBS Engineers has the experience to provide Acoustic Consulting Service advice, ensuring the highest quality, most practical outcome and achieving the expectations of our clients. Our Acoustic Services team provides expertise in the following services:

- Noise Management Plans
- Industrial Noise Control
- Environmental Noise Assessment
- Environmental Noise and Vibration Control
- Structural Dynamics
- Speech Privacy
- Sound-proofing Advice



Audio Visual Services

The implementation of our innovative technical solutions in integrated Audio Visual for the high end residential and commercial market is highly praised. Our Audio Visual consultancy team work closely with clients to best understand your needs and to assist you in the improvement of business performance. The CBS Audio Visual services team specialises in the following:

- Video Conferencing and Tele-Conferencing
- Distance Learning
- Digital Audio and Video Recording
- Streaming and Distribution
- Digital Signal Processing Electronics
- Major Audio System Design
- Communication Systems
- Automated Control Systems
- Sound Reinforcement Systems





OUR CAPABILITIES

2.2 Our Services

CBS Engineers provide a range of engineering services, which include:



Security Services

CBS Engineers offers a comprehensive service by assisting the client with their security needs in protecting property and organisations to the highest standard. We provide professional technical services for the design, procurement and implementation of all types of electronic security. Our Security Services team specialises in the following:

- Emergency Voice Evacuation
- Intruder Detection Systems
- Remotely Monitored Security Systems
- Access Control Systems
- Intercoms
- External Video Motion Detection Systems
- Remotely Accessed Systems
- CCTV
- Vulnerability Assessments
- Audio and Video Surveillance Systems
- Central Control, Monitoring and Recording Stations

Civil and Structural Engineering Services

CBS Engineers Civil and Structural team are an enthusiastic mixture of youth and experience, with impressive design, documentation and computer skills. Our dedicated team utilise the latest technology and a variety of powerful software packages to provide our clients with excellence in engineering design. We specialise in the following:

- Civil Design
- Stormwater Design
- Flood Analysis
- Road Design
- Drainage Design
- Structural Design
- Concrete Design
- Slab Design
- Steel Design
- Retaining Wall Design



With the continuous development of the modern world, we constantly innovate, improving and updating our services, in order to achieve the best outcomes and most economical solutions for our clients.

KEY PEOPLE

2.3 Meet Our Key People



Maher Chamsine

Director, Mechanical Engineer

Maher is responsible for the operational management, client relationship management, project management and corporate management of the CBS Engineers business. He prefers a hands-on approach on major projects, from conceptual design, detailed design and throughout the construction phase, whilst ensuring that the full expectations of our clients are always met.

His experience encompasses all project phases, as well as co-ordination of designs with architects, structural engineers and other project consultants. He has a passion and knowledge in the field of low energy consumption and Environmentally Sustainable Design (ESD).

Maher brings extensive experience in building services engineering, including: mechanical, electrical, hydraulic, fire, acoustics, lift, structural, control and security. He has more than 15 years of practical and professional experience on a wide of range of projects, including Residential, Commercial, Hospitality, Educational Facilities, Hospitals, Childcare Centres and Industrial projects. During his time as an engineer, Maher has worked in Dubai on the Dubai Festival City project.

Ray Romanos

Associate Director, Electrical Engineer

Ray possesses a breadth of experience in Electrical Services across a range of diverse fields including retail, commercial, residential, and industrial, in both the public and private sectors.

Ray has keen interest in working in high-end niche projects requiring value-added expertise, including generator and UPS design, communications, data centres, main switchboard/substation upgrades and general infrastructure services.

He believes that relationship management is pivotal to the execution and delivery of successful projects, and as such, he adopts a relationship-based approach when it comes to project management. Not only does he view a project as an avenue to develop his technical and interpersonal skills, but it is also a medium for Ray to foster and support relationships between all stakeholders in a project.



KEY PEOPLE

2.3 Meet Our Key People



Anthony Gilbert

Senior Hydraulic Engineer

Anthony is responsible for Hydraulic Services design, as well as the project management of building engineering services, from concept stage through to practical completion.

Having gained a broad spectrum experience from the construction industry, Anthony has made the transition into consulting.

He has since gained experience in the conceptual and detail design of building services and the co-ordination of designs with architects, electrical engineers, structural and other project consultants.

Anthony has extensive leadership roles and applies his technical expertise to all of his exciting projects. He has been involved in a wide range of building services projects in a variety of market sectors.

Anthony ensures excellence in both project delivery and client satisfaction.

Ben Johnston

Senior Fire Engineer

Ben is our Fire Protection Services Engineer, with extensive consulting experience in this field. He specialises in wet fire services and brings hands-on experience, design optimism and problem solving foresight developed from the competitiveness of his previous experience in contracting.

His expertise ranges from sprinkler systems, gas suppression systems, water mist systems, hydrant and hose reel systems, portable fire extinguishers, fire detection, emergency warning systems and intercommunication systems.

He is proficient in using the following standards to design these systems - Building Code of Australia, Australian Standards, National Fire Protection Association Standards (NFPA) and Factory Mutual Standards.



KEY PEOPLE

2.3 Meet Our Key People



Abdul Nachabe

Senior Structural Engineer

Abdul is a structural engineer, specialising in structural analysis and design. He has completed a Masters in Structural and Foundations Engineering at the University of Sydney.

His skills and capabilities include finite element analysis and modelling of steel and concrete structures, soil structure interaction of pile foundations and in ground pits.

He has design experience including: portal frame structures of industrial facilities, steel roofs and cantilever canopies, reinforced concrete and pre-stressed concrete structures, ranging from short span rail bridges and retaining walls, to rail station platforms and pre-cast concrete and masonry buildings.

Abdul's multiple project tasks have included structural verification of existing structures to ensure ultimate design capacity at its current condition. This involved extensive analysis using linear and non-linear elastic buckling solvers in Strand7. The loading conditions ranged from earthquake and wind loading, to lateral earth pressure and surcharge on specific structures.

His ability to work in a team environment and communicate clearly in open discussions has allowed him to understand complex technical problems from senior colleagues that provided the opportunity to further his knowledge and technical ability.





ASSOCIATIONS & ACCREDITATIONS

2.4 Association Memberships & Relevant Certifications Held

- Senior Engineers – Chartered Members with the Institute of Engineers
- Senior Engineers – Accredited Certifiers as Civil and Structural Engineers with Building Professionals Board
- Nat-Hers and Basix Assessor – Relevant DIPNR accreditation and training
- BCA Assessor and Certifier – Accredited with the Building Professionals Board as an Accredited Certifier Class A1



ENGINEERS
AUSTRALIA



Department of Infrastructure
Planning and Natural Resources

TRACK RECORD

3.1 Leading projects completed



Education

- USYD Central Building, University of Sydney, NSW
- SIT Building, Level 5 Fit-out, University of Sydney, NSW
- Hazardous Goods Store, University of Sydney, NSW
- Premiers Sporting Challenge, 6-off Sports High Schools, Government Works NSW
- Trade Training Centre: Eden Marine HS, Bega HS, Balranald CS & West Wyalong HS
- Trade Training Centre: Miller HS, Liverpool Boys High School & Wiley Park Girls High

Healthcare/Childcare

- Childcare Centre, Mona Vale, Sydney NSW
- The Gentle Dentist, 260-262 Beamish Street Campsie NSW
- Childcare Centre, 12 Waterloo Road North Ryde NSW
- Childcare Centre, 124 Lambeth Street Panania NSW
- Childcare Centre, Green Square NSW

Retail

- Chatswood Interchange, Sydney NSW
- Westpoint Shopping Centre, Stage 1 Level 5 & 7 fit-out, Sydney NSW
- Westpoint Shopping Centre, Stage 2, Sydney NSW
- Stockland Shopping Centre, Batemans Bay, NSW
- Shop 2, 183 Elizabeth Drive, Liverpool NSW
- Proposed Cafe, Auburn NSW
- The Ponds Shopping Centre, Priceline Pharmacy
- 55 Pyrmont Bridge Road Pyrmont NSW, comprised of Office areas
- OPPO Office, 112-118 Talavera Road, Macquarie Park NSW
- Shop 2, 230 Coward Street, Darlington NSW
- 249 Forest Road, Hurstville NSW
- Dubai Festival City, Dubai, comprised of Offices and Retail area



TRACK RECORD

Hospitality

- The Baxter International Hotel, 113-121 Baxter Road Mascot NSW
- Great Southern Hotel, 715-723 George Street Sydney NSW

Residential

- Breakfast Point Development, Lot 5 Country Club, Sydney NSW
- Breakfast Point Apartments, Homebush, Sydney NSW
- 2-8 Bowler Avenue Fairfield, Government Works Housing NSW
- 40-44 Montrose Avenue Fairfield, Government Works Housing NSW
- 82-94 Bligh Street Fairfield, Government Works Housing NSW
- 21-23 Cowper Street, Parramatta NSW (47 Units)
- 437-443 Wattle Street, Ultimo NSW (34 Units)
- 551-553 Princess Highway, Rockdale NSW (54 Units)
- 715-723 George Street, Sydney NSW (8 Units)
- 1-11 Donald Street, Carlingford NSW (74 Units)
- 52-62 Arncliffe Street, Wolli Creek NSW (164 Units)
- 321 Forest Road, Hurstville NSW (48 Units)
- 80 Park Road, Homebush NSW (19 Units)
- 9-15 Deane and 18-20 George Street, Burwood NSW (205 Units)
- 99-101 Clapham Road, Sefton NSW (41 Units)
- 1 Victoria Avenue, Peakhurst NSW (37 Units)
- 4-6 French Avenue, Bankstown NSW (97 Units)
- 11-13 Old Northern Road, Baulkham Hills NSW (47 Units)
- 128 Military Road, Neutral Bay NSW (22 Units)
- 40-50 Arncliffe Street, Wolli Creek NSW (175 Units)
- 316-331 Burns Bay Road, Lane Cove NSW (218 Units)
- EVE 1 Coulson Street, Erskineville NSW (197 Units)
- EVE 2 Coulson Street, Erskineville NSW (124 Units)
- EVE 3 Coulson Street, Erskineville NSW (129 Units)
- EVE 4 Coulson Street, Erskineville NSW (90 Units)
- Pacific Highway, St Leonards NSW (530 Units & 6 Underground Carpark)

3.1 Leading projects completed





RELIABILITY & RISK MANAGEMENT

3.2 Delivery Performance and Reliability

CBS Engineers are totally committed to delivering our projects on time, consistently meeting deadlines set by our clients.

We also have the resources and expertise to accommodate new projects with short notice.

4. Quality Management

CBS Engineers have implemented a Quality Management System for all design services to achieve a high quality work in accordance with AS/NZS ISO 9001-2000 – Quality Management System.

All works completed in the office are subject to our internal quality audit. This system will ensure quality on all projects which are issued to our clients.

Our systems have been designed to comply with the following:

- Quality System in accordance with AS9001:2000
- Corporate OH&S system in accordance with NSW Guidelines Edition 4
- Project Environmental System



4.2 Insurances

CBS Engineers have implemented a Quality Management System for all design services to achieve a high quality work in accordance with AS/NZS ISO 9001-2000 – Quality Management System.

Insurance Type	Insurer	Insurance Cover
Professional Indemnity	CGU	\$10,000,000
Public Liability	QBE	\$20,000,000
Worker's Compensation	QBE	As per Worker's Compensation

5.1 Communication

We understand the importance of communication in any business transaction, especially in engineering design services. Communication between ourselves and our clients is a top priority to all our team members. It is only through maintaining open lines of communication that we are able to produce the best possible outcomes on each and every project.

We usually communicate with our clients by phone and/or email, depending on which suits you best. Where appropriate, we arrange and attend regular meetings to ensure your project is on track. The regularity of our communication often depends on the individual project and how much information we require in order to progress with the project.

5.2 Continuous improvement / innovation

We encourage our engineers to attend conferences and presentations run by The Institution of Engineers Australia, The Chartered Institution of Building Services Engineers (CIBSE), Building Code of Australia (BCA) or presentations held by any air conditioning manufacturer. This helps our engineers stay up-to-date and learn about new products in the market.

We consistently seek new and better ways to exceed the expectations of our clients.

5.3 Responsiveness

All phone calls made to our office are answered immediately, unless we are on another call. We return your calls as quickly as possible. Our clients are always our number one priority.





CBS Engineers Pty Ltd

ACN: 159 699 322

Street address: Level 1/58 Restwell Street, Bankstown NSW 2200

Postal Address: PO Box 119, Bankstown NSW 1885

Phone number: (02) 9788 6446

Email address: info@cbsengineers.com.au

Website address: www.cbsengineers.com.au